



Software updates in the twinkling of an eye

What is XPressUpdate?

XPressUpdate is a professional standard solution which represents a comfortable and secure update function via internet/LAN. By implementing this tool into their Windows and Linux applications, software developers can extend and increase the value of their software products. XPressUpdate is based on a client component for Windows and/or Linux, which can be implemented fast and easily in existing or new applications. The user has the possibility to download software updates and extensions either per mouse click or fully automatically.

The optional server module serves to check up on the validity of license data (e.g. user name, password) so that the software is protected against pirate copies.

XpressUpdate for whom?

XPressUpdate is made for software producers / distributors who want to increase the value of their software with the help of an efficient update module and for whom the protection of their intellectual property is a main objective.

Features

- automatic check up on new updates (according to the date, the version or the file size)
- connection via HTTP (with proxy- / firewall support) or file-based in LAN
- user-defined selection of the components and files which are to be updated
- update of running applications with restart / reboot
- compressed file transfer for traffic reduction
- server-based license check with database connection (Interbase, MySQL, Oracle, ODBC etc.)
- project-based setup tool (Stand alone or WebAdmin)
- dialog function for license contract, news or restart as text, RTF or HTML
- support of diverse applications of a single producer
- backup function with optional restoring
- log function, possibility of blocking users, statistical analysis
- register function of users via browser or client interface

Versions

- **XPressUpdate Lite-Edition**
Clientmodul without user-license check and database
- **XPressUpdate Standard-Edition**
Clientmodul with ftp-based user-license check
- **XPressUpdate Enterprise-Edition**
Server module offering server-based license check with SQL-based database connection, WebAdmin, log function, possibility of blocking users, statistical analysis, register function of users via browser or client interface, newsletter component and statistics

Availability

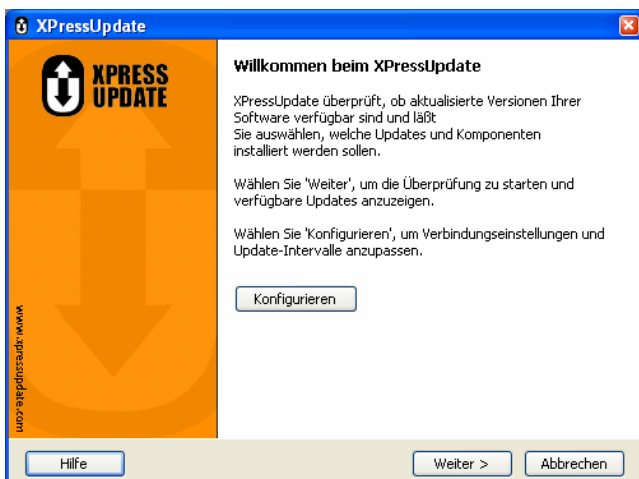
XPRESSUpdate Enterprise-Edition will soon be available for Windows operating systems. In the short term the other versions and a version for Linux systems will follow

Description of Functions: XPRESSUpdate Client

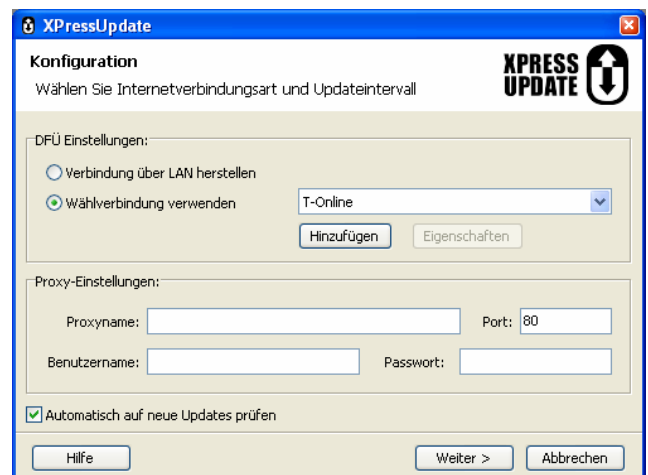
The client component enables the user to check out his producer's updates and new components via internet. In order to do so it is necessary to install the XPRESSUpdate Client, which is contacted via COM interface or special parameters taken from registered programs.

Another possibility is to activate the client software via "Control Panel". The installed programs can be updated with the help of XPRESSUpdate. The client is easy to handle and it is similar to well-known programs like the Microsoft-Windows-Installer.

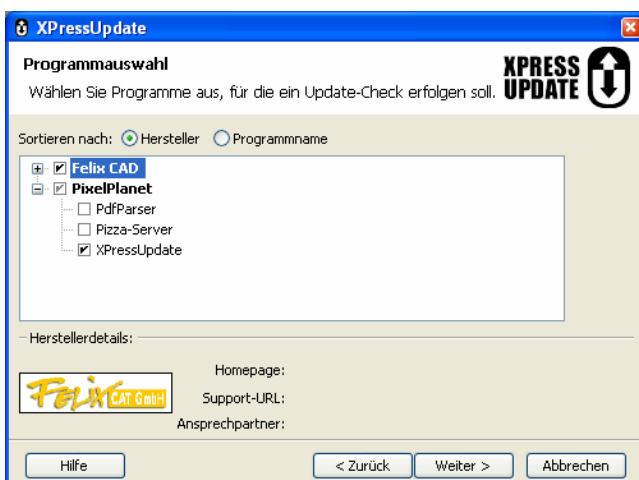
See here a sample of screenshots:



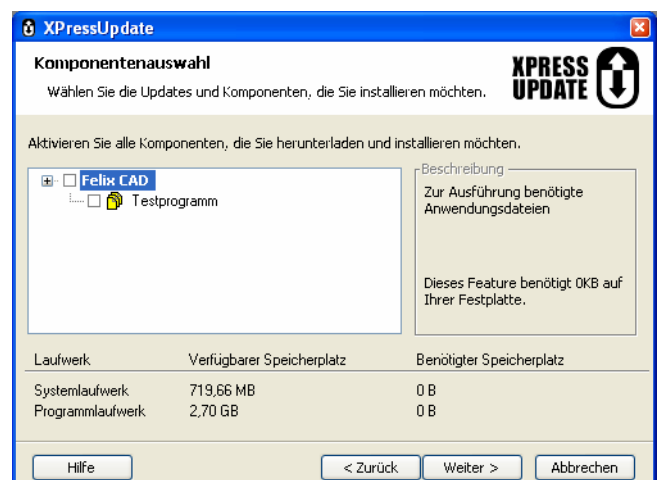
1. Welcome Screen with possibility of configuring the internet connection



2. Configuration of the internet connection (optional)



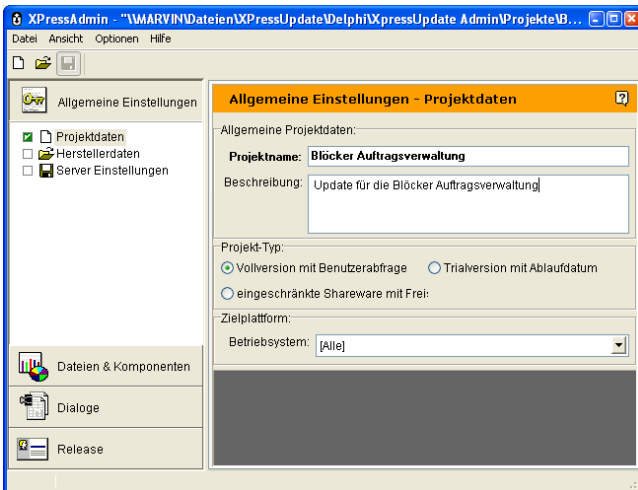
3. Selection of Program for the update test



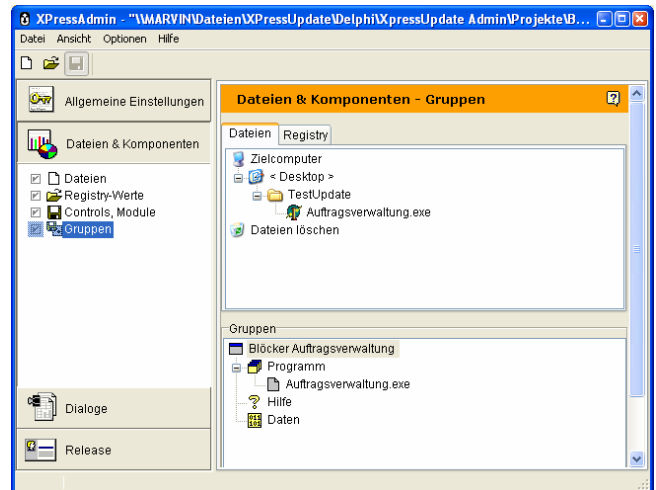
4. Selection of the updates and components which are available and which should be installed

Description of Functions: XPRESSUpdate Admin

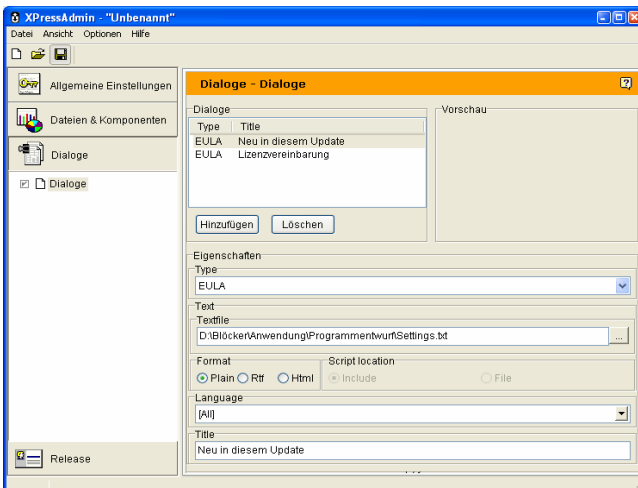
With the help of the XPRESSUpdate Admin the developer composes the files for the update. A wide range of configuration possibilities and surfaces which are easy to handle enable the developer to fully control the kind and scope of the update.



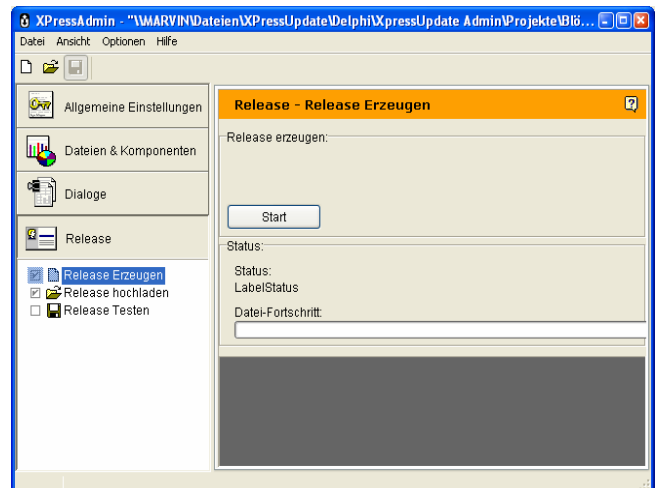
5. General Settings - Here, you can store extensive settings and information concerning the project.



6. Files and Components - Here, you can define files, registry data, controls and modules which are supposed to be updated.



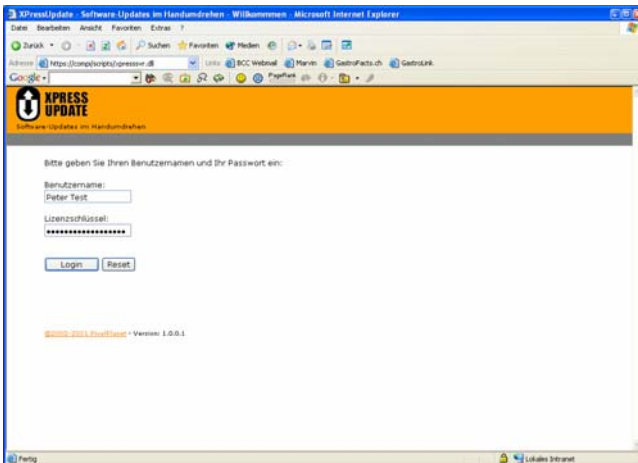
7. Dialogues - Here, the software defines messages update and license agreements which are supposed to be shown to the user during the update.



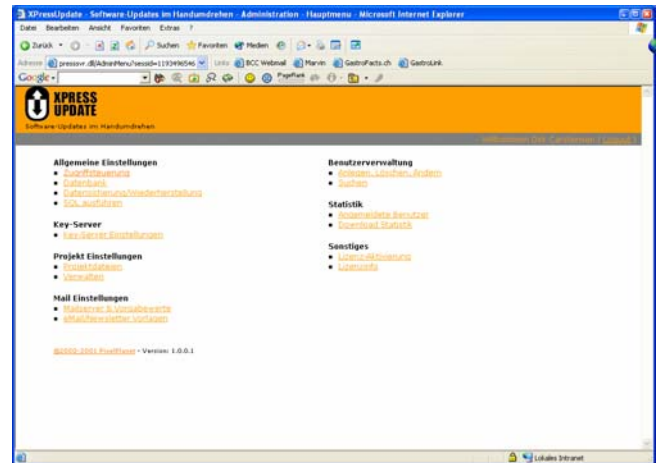
8. Release - Here, the software produces the update files and puts them onto the update server. In the end, the update can be tested.

Description of Functions: XPRESSUpdate WebAdmin

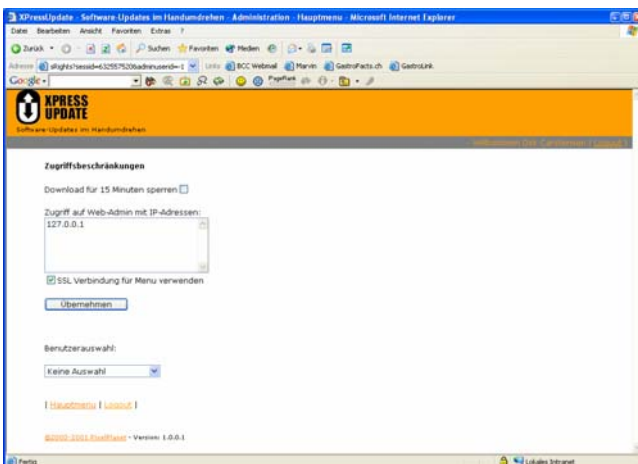
The XPRESSUpdate WebAdmin gives you the possibility to carry out settings, user identifications, statistics and marketing activities (newsletter). Defined webserver modules allow you to use automatic registry and registration modules.



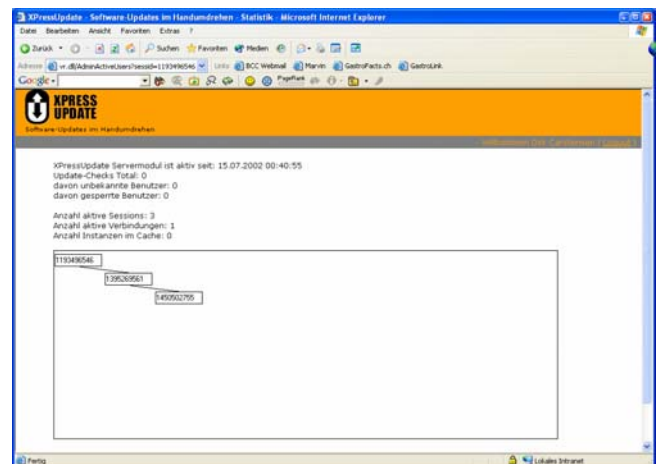
9. Login with HTTPS – support



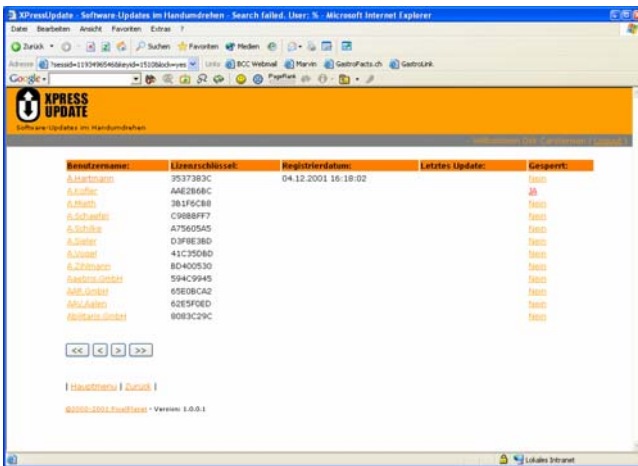
10. Main Menu - From here, all functions are easily accessible.



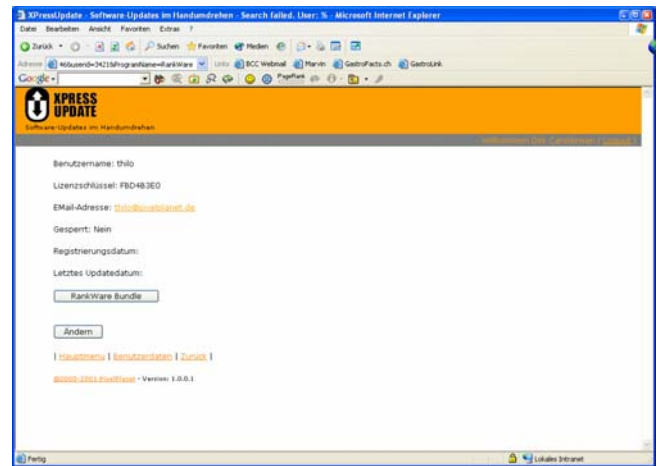
11. Control of Access - Here, you can take up users (4 levels) and define your kind of access (SSL) and approved IP-addresses.



12. Statistics - Here, you can see how many users and which of them access the update module.



13. Table of User - Here, you can access all license and registry information / data. You can also activate



14. Details for User - Here, you can find all the details about a selected user (license).

For further informations feel free to contact:

PixelPlanet Ltd.

Hermann-Koehl-Str. 7 - 28199 Bremen - Germany
 Phone +49 421 24778-0, Fax +49 421 24778-24

Software by happy developers - <http://www.pixelplanet.de/english>